



# NEXT LEVEL SOLUTIONS

CONEXPO-CON/AGG EDITION



EDGE INNOVATE  
PHOTO COMPETITION



We Have A  
**WINNER**  
Congratulations





**INNOVATION  
AT WORK**

## **CONTENTS**

- 5 Director Insight
- 6 What to Expect from EDGE Innovate at CONEXPO 2023
- 8 Driving the Circular Economy in Australia
- 10 EDGE Launch New Products
- 15 Family Owned Company with a Global Reach
- 20 Waste Recycler Gets an “EDGE”
- 26 American Property Experts Double Their Production
- 28 The EDGE VS420 - Tried, Tested & Proven
- 30 2022 Photo Competition Winners
- 36 Cutting Costs for a Crushing & Screening Specialist
- 40 Second Queen’s Award for EDGE Innovate
- 45 Game Changer for Veolia, Australia
- 50 EDGE Goes from Strength to Strength with CAT Power





## Director Insight 2022 A YEAR IN REVIEW

**2022 has been another challenging year. Cost increases coupled with component supply issues have been the biggest issues.**

The challenge brought forward by availability of components has eased but only slightly. We have had to constantly adjust our production schedule to meet this ever changing scenario. Ultimately, we have surpassed our output goals and targets but the order in which equipment has been shipped to customers has had to be realigned. Issues at ports has been exacerbated by huge demand and strike action which has placed further stress on delivery times.

The good news is that the challenges brought forward by Covid seems to be over and life has more or less returned to normal. With the launch of new products at the beginning of 2022 including the FTS Radial, TRM831 trommel and the TRT620R trommel we have had an outstanding year of growth.

The size and quality of our team has increased, and we have again invested heavily in product development and innovation. 2023 will see the launch of more new world class, innovative products and we look forward to sharing this good news with you all.

Our order book has never been as healthy. We continue to challenge everything we do to improve efficiencies, machines design and customer support. As we travel down the never ending road of continuous improvement, we are more confident than ever of the quality of our products and our services.

We look to 2023 with excitement and a determination. We are building relationships with new partners and new markets but are more than thankful for the long standing relationships and partnerships that we already have.

Thank you; to you all for your help, support, and friendship throughout the year.

Darragh Cullen, EDGE Innovate Managing Director



**NORTH AMERICAN DISTRIBUTOR MANAGER**  
*Lee Williamson*  
p: 205-777-9987  
e: lee.williamson@edgeinnovate.com

**LATIN AMERICAN & AFRICAN DISTRIBUTOR MANAGER**  
*Philip Moore*  
p: +44 (0) 78708 79805  
e: philip.moore@edgeinnovate.com

**EUROPEAN & AUSTRALASIA DISTRIBUTOR MANAGER**  
*Tom Connolly*  
p: +44 (0)79559 29626  
e: tom.connolly@edgeinnovate.com

**SCANDINAVIAN & MIDDLE-EAST DISTRIBUTOR MANAGER**  
*Steven Conway*  
p: +44 (0)78813 369933  
e: steven.conway@edgeinnovate.com

**MARKETING MANAGER**  
*Adrian Donnelly*  
p: +44 (0)28 87 740525  
e: adrian.donnelly@edgeinnovate.com

**HEAD OFFICE**  
EDGE Innovate NI Ltd.  
30 Farlough Road  
Dungannon, Co.Tyrone, BT71 4DT  
Northern Ireland  
p: +44 (0)28 87 740525  
e: info@edgeinnovate.com  
w: www.edgeinnovate.com

### ARTICLES

All articles submitted for publication become the property of the publisher. EDGE Innovate reserves the right to adjust any article to conform with the magazine format.

### COPYRIGHT

All material in the EDGE Innovate Next Level Solutions Magazine is copyright and no part may be reproduced or copied in any form or by any means (graphic, electronic or mechanical including information and retrieval systems) without written permission of the publisher. The Editor welcomes contributions but reserves the right to accept or reject any material. While every effort has been made to ensure the accuracy of information, EDGE Innovate will not accept responsibility for errors or omissions or for any consequences arising from reliance on information published. The opinions expressed in EDGE Innovate Next Level Solutions Magazine are not necessarily the opinions of, or endorsed by EDGE Innovate unless otherwise stated.

# CONEXPO 2023

## NEXT LEVEL SOLUTIONS



### WHAT TO EXPECT FROM EDGE INNOVATE AT CONEXPO 2023

We are delighted to be back at CONEXPO once again. This will be our fifth instalment of the exhibition and we are extremely excited that our customers will get to experience the company’s newest machines, technology and services. CONEXPO is North America’s largest construction trade show representing asphalt, aggregates, concrete, earthmoving, lifting, mining, utilities and much more.

Our theme for this years event is “Next Level Solutions” Our objective is to showcase the latest equipment and technology that allows organisations to increase processing capacity, more efficiently and with the greatest possible return. The equipment we have on display at CONEXPO 2023 will allow operators to do just that; to bring their operation to the “Next Level”. From the largest mobile trommel on the market in the shape of the EDGE TRM831, to our FTS75 Mulch Master which offers blockfree stockpiling with production rates of up to 1000yd<sup>3</sup>/hr. The FTS Mulch Master innovatively developed by EDGE Innovate enables operators to stockpile more material and over much less space. The high speed, high torque

turning drum found within the hopper ensures high throughput and complete mixing of the feed material.

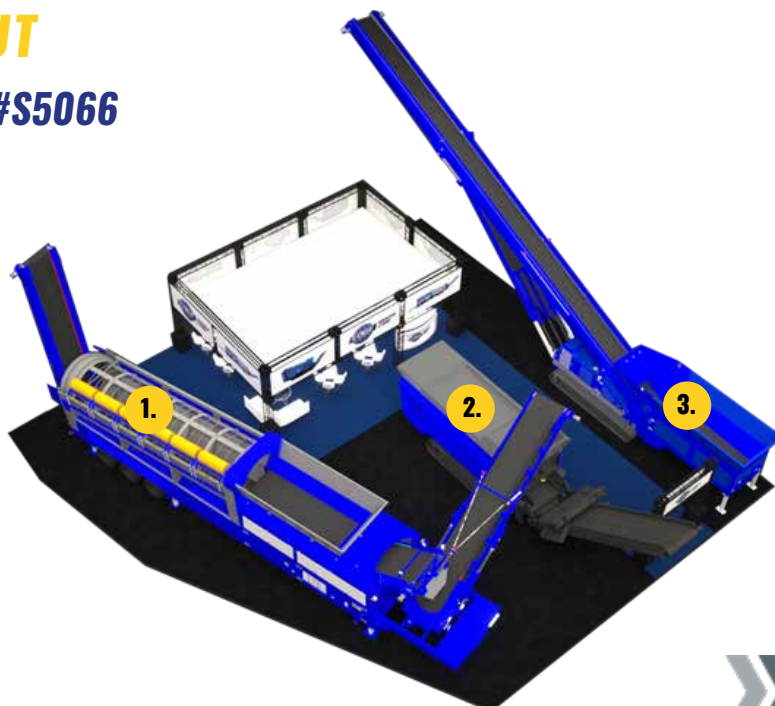
The EDGE VS420 high torque shredder has been showcasing its ability throughout North America and further afield. It is tried, tested and proven to achieve high throughput capacities whilst consuming considerable less fuel per hour than competing models from the same equipment class.

EDGE’s next generation shredder has been developed for ultimate versatility and high resistance to contaminants with a number of customisable shredding programmes and chamber configurations available. An intelligent operating system which incorporates tramp metal protection provides the ultimate security from contaminants and prevents asset damage.

Discover more about EDGE Innovate’s “Next Level Solutions” using the layout map below.

### STAND LAYOUT

#### EDGE INNOVATE | #S5066





# EDGE INNOVATE PRODUCTS ON DISPLAY

1.



## EDGE TRM831 // UNRIVALLED PRODUCTION

One of the largest mobile trommels in North America; the EDGE TRM831 offers high production rates with extensive stockpiling capacities thanks to its end discharge conveyor design and remote 180° radial fines conveyor. With unrivalled production rates, the EDGE TRM831 is ideal for a variety of applications such as top soil, recycling, composting and is proven in construction and demolition waste.

---

DRUM DIMENSIONS:	2.3m X 9.3m (8' X 31')
HOPPER CAPACITY:	12m <sup>3</sup> (15.7yds <sup>3</sup> )
SCREENING ANGLE:	4-7°
POWER SOURCE:	CAT4.4 140Kw (188HP)

---

2.



## EDGE VS420 // SHREDDER EVOLUTION

The EDGE VS420 is a high capacity, high torque twin shaft shredder that is ideal for the processing of a large array of materials including; green waste, MSW, C&D waste, biomass and end of life tyres.

---

SHREDDER TYPE:	Vertical Slow Speed
NUMBER OF SHAFTS:	2
MAXIMUM TORQUE:	240,000Nm
POWER SOURCE:	CAT C9.3 310Kw (420HP)
CHASSIS FORMATS:	Tracked / Wheeled

---

3.



## FTS75 Mulch Master // BLOCKAGE FREE STOCKPILING

Game Changing technology, the EDGE FTS Mulch Master is setting new standards in the turning, blending and stockpiling of organic material. Pioneered by EDGE Innovate; the FTS Mulch Master is a portable feed stacker that is specifically designed for processing lower density, organic materials such as mulch, compost and soils. Accept no imitations.

---

HOPPER CAPACITY:	12.7m <sup>3</sup> (16.9yd <sup>3</sup> )
HOPPER AUGER:	High Speed c/w Forward & Reverse functionality
DISCHARGE CONVEYOR:	23m (75')
DISCHARGE HEIGHTS:	9.3m (30'9")
MOVEMENT:	Self Propelled
PIECE SIZE:	>400mm (4")
STOCKPILE MODE:	Conical

---

# DRIVING THE CIRCULAR ECONOMY WITH AUSTIP RECYCLING

Austip Recycling is a leading, second-generation family-owned and managed recycling company specialising in providing a range of skip bin hire services to all types of clients across the suburbs of Sydney.

A fully licensed skip bin hire company, Austip Recycling have years of experience in disposing of waste, waste recycling, and skip bin hiring services. The goal of the Austip Recycling is to divert waste from landfill using the latest, cutting-edge equipment to process material into environmentally sustainable products, which are then re-used within the industry and across the community.

To deliver high rates of resource recovery and to supply quality recycled products and landscaping materials, Austip Recycling have invested in an EDGE Innovate designed mobile recycling plant from Australian distributor, FOCUS enviro at their Riverstone waste recycling centre.

## BOOSTING RECOVERY

When the Austip recycling team were researching what the right equipment would be for their application and material profile, they leveraged the experience that FOCUS enviro had illustrated through installing multiple waste recovery plants in Sydney and throughout Australia.

The mobile system FOCUS enviro recommended would allow Austip Recycling to adapt the set-up to local market conditions.

The investment at the Riverstone recycling centre features 3 pieces of high-powered EDGE Innovate equipment including an EDGE TRT622 trommel screen, a Slayer XL shredder and 4 bay picking station, which work in harmony to ensure effective processing at each downstream stage. The plant utilizes a combination of mechanical and manual separation technology to ensure efficient waste recovery. After initial pre-picking to remove visible items such as large slabs of concrete and metal, the material is pushed into the shredder. In addition to standard shredding, the machine features a heavy-duty magnet that removes metals for later recovery.

The material then moves through a trommel that separates soils and fines for classification and disposal. The remaining material – anything larger than 20 millimetres (3/4") – is sent to the picking station. At the picking station light materials such as plastics and cardboard are separated, with heavier materials including metal, concrete, brick and timber dropped into under-side bins.







The entire system barring the picking station is tracked. This provides added flexibility, allowing Austip Recycling to adapt and adjust processes to meet changing needs and waste profiles.

**“The new EDGE Innovate designed recycling plant has contributed greatly to our ability to divert large volume of waste from landfill. It has allowed the team to extract the maximum amount of useful material from the incoming waste, allowing us to recycle in excess of 95% of all materials received at our Resource Recovery Centre”.**  
Joshua Berardinelli, Austip Recycling Operations Manager.

## CUSTOMISABLE AND SCALABLE

Due to the variable make up of demolition waste it is vital for any processing solution to be highly adaptable. It is for this reason that each EDGE mobile product is completely customised to meet the operators exact requirements and are fitted with highly adjustable components such as differing screen media, screen angle, belt speeds, magnet height and location, cutting tools and so much more. Furthermore, as EDGE Innovate’s recycling range is entirely mobile, operators have supreme flexibility on how they are utilised and enables them to scale or adjust the plant to meet their changing requirements. Additional benefits include same day set up, ease of positioning and relocation as well having the ability to run an EDGE product independently or as an integral part of an existing process.

John McGuinness, Focus enviro commenting on their latest installation, **“Obtaining the quickest return on your capital investment depends on how quickly operators can be up and running, and the volume of**



**commodities that an operator can recover from their waste stream. EDGE Innovate’s range of mobile solutions are tried and tested in Australia, are quick and easy to install, require no on-site civil works, represent a low capital outlay and are proven to achieve high commodity recovery levels. It is brilliant to see another valued FOCUS enviro customer reaching fantastic recovery rates from C&D material, diverting large volumes of material from landfill and assisting in creating a circular economy. The EDGE Innovate recycling system allows the team to achieve excellent recovery rates, with all maintenance and training provided by the experienced team at FOCUS. Credit to the Austip Recycling for running such an efficient, flag ship operation, and always striving to meet the highest standards for their customers waste streams”.**

For more information on EDGE’s range of mobile recycling range, visit: [www.edgeinnovate.com](http://www.edgeinnovate.com).



# *EDGE LAUNCH NEW PRODUCTS*





**COMPOST 2022** held in Austin, Texas was the venue for the launch of two new products from EDGE Innovate's growing recycling range. The EDGE TRM831, the biggest trommel EDGE has produced to date and the uniquely designed FTS Radial were revealed at what is the world's largest composting event.

**They say everything is bigger in Texas and the new EDGE TRM831 wheel mounted trommel was staying true to this time old adage with an operating length of 31.2m (102') and a total weight of 37 tonnes (40.7UST).**

EDGE's largest trommel to date offers high production rates with extensive stockpiling capacities thanks to its end discharge conveyor design and remote 180° radial fines conveyor. With a 2.3m (7'7") X 9.3m (31') long drum and a hopper capacity of 12m<sup>3</sup> (15.7 yds<sup>3</sup>), the TRM831 provides excellent screening offering operators with unrivalled production rates.

The EDGE TRM831 portable trommel has been designed to provide high-capacity screening across various applications including topsoil, compost, sand and household waste.

### TRM831 SIGNATURE FEATURES

EDGE's latest trommel incorporates a host of impressive design features such as, a remote 180° radial fines conveyor as standard, an eco-power saving functionality which reduces unnecessary running costs and a user-friendly HMI control panel for the easy adjustment of machine parameters.

A screening area of 57m<sup>2</sup> (613.5yds<sup>2</sup>), provides ample time for product separation which EDGE has complimented with a variable speed 2.3m X 9.3m (8'X31') long screening drum, powered via an efficient hydrostatic drive system. EDGE states that high production rates offered by the TRM831 is maintained thanks to their intelligent load management system which prevents drum overload and ensures that the trommel screen is always operating at optimum performance with minimal supervision.

Boasting the largest hopper capacity in its class, the EDGE TRM831 encompasses a 1500mm (60") wide, variable speed feed conveyor complete with load sensing and automatic feeder shut down to ensure

maximum uptime. Additional hopper options include a reject grid and a two-deck vibrating screen for the pre-treatment of the feed material.

### OPERATIONAL FEATURES

Utilising the latest engine technology, the EDGE TRM831 is powered via a 188HP (140kw) Caterpillar C4.4 Tier 4 Final / STAGE V engine, resulting in extremely low engine and noise emissions. Further fuel savings are made possible thanks to EDGE's unique Eco-Power Saving Mode which automatically reduces engine speed to idle when not processing material for a set period. For enhanced savings and zero emissions, the EDGE TRM831 is also available with a direct electric power source configuration.

The TRM831 discharges fines material via a radial fines conveyor with a discharge height of up to 6m (19'8"). With a 180° radial functionality as standard, the radial fines conveyor facilitates the creation of impressive stockpiles and can reduce the double handling of material by an impressive 75%.

A wireless remote with an operating distance of up to 100m (328') gives the operator control over engine and feeder speed, screening angle, tipping grid cycles and full control of the radial fines conveyor including radial functionality and discharge height adjustment. EDGE states that quick maintenance access is provided via large, spacious powerunit canopy and uplifting drum bin doors which provide easy access to the power unit assembly and trommel drum. A quick drum exchange is facilitated via a hydraulic sliding feeder and hydraulic raising drum cleaning brushes. This allows operators to simply lift out the existing drum to be replaced with the various drum types available.

EDGE's largest wheel mounted trommel is fitted with a tri-axle bogie complete with fifth wheel hook-up and air brakes. Transportation between sites is exceptionally easy with redeployment taking a matter of minutes thanks to hydraulic folding discharge conveyors and chassis jacklegs.



**WATCH VIDEO**





**WATCH VIDEO**

## THE FTS RADIAL FEED STACKER

Also turning heads at the world largest compost exhibition was the new EDGE FTS Radial, which is setting new standards in the turning, blending and stockpiling of organic material. A unique concept from EDGE Innovate; the FTS Radial is a portable feed stacker that is specifically designed for processing lower density, organic materials such as mulch, compost and soils. The EDGE FTS Radial direct feed stacker is also available with an aggregate style hopper, allowing operators to increase their stockpile holding capacity or to efficiently load vessel and barges. Additional options include, a two deck vibrating live head, overband magnet, wireless remote functionality and radio controlled reject grid.

When set up for processing organic material, the FTS Radial has been proven to optimise the conditions of biological decomposition, allowing compost windrows to release excess heat, aerate and untangle. This is possible by a high speed, high torque turning drum incorporated in the FTS Radial hopper that ensures high throughput and the complete mixing of the feed material. EDGE's unique hopper design incorporates steep hopper sides, a high speed 1.4m wide feed conveyor and a regulating auger which conditions material and prevents material bridging. EDGE states that its unique design ensures 100% of the feed stock sees the turner – a process not possible with traditional windrow turners.

## OPERATIONAL FEATURES

The EDGE FTS Radial is powered via a 134HP (100kw) Caterpillar C3.6 Tier 4 Final / STAGE V engine, resulting in extremely low engine and noise emissions and impressively low fuel consumption. With the feed position remaining constant, the FTS Radial can accept loads from 2 sides of the hopper giving operators greater set-up flexibility.

A maximum feed in height of 3.1m (10'3") allows the FTS Radial to be loaded directly via wheel loaders, excavators or high-speed grinders.



Fitted with a remote operated 180° radial discharge conveyor as standard, the EDGE FTS Radial stacker has a maximum discharge height of 6m (19'10") facilitating the creation of stockpile capacities of up to 952m<sup>3</sup> (1246yds). Added versatility is provided by the FTS Radial's ability of continuous stockpiling whilst tracking, giving operators the ability to increase their stockpile holding capacity over a much smaller footprint.

**Further information on EDGE Innovate's latest product offering can be found by visiting [www.edgeinnovate.com](http://www.edgeinnovate.com).**

# EXTRACTING MAXIMUM VALUE FROM WASTE



**HIGHLY ROBUST  
DESIGN**



**QUICK & EASY  
SET UP**



**LOW CAPITAL  
OUTLAY**



**HIGHLY  
CUSTOMIZABLE**

Obtaining the quickest return on your capital investment depends on how quickly operators can be up and running, and the volume of commodities that an operator can recover from their waste stream. EDGE Innovate's range of mobile solutions are tried and tested, are quick and easy to set up, require no on-site civil works, represent a low capital outlay and are proven to achieve high commodity recovery levels.



[info@edgeinnovate.com](mailto:info@edgeinnovate.com)

[www.edgeinnovate.com](http://www.edgeinnovate.com)



**BEST  
MANAGED  
COMPANIES**

Gold  
Standard



# ***A FAMILY COMPANY WITH A GLOBAL REACH***

**When County Tyrone based KMC Engineering opened its doors in 1994 no one could have known that 14 years later the family owned company would evolve into EDGE Innovate to become one of the world's biggest manufacturers and exporters of sophisticated equipment for the quarrying, waste handling and recycling sectors.**

Today, as it increasingly focuses on the growing environmental sector, EDGE Innovate employs around 200 people directly, and currently exports more than 96% of its products from its state-of-the-art manufacturing facility, having developed a strong presence throughout overseas markets such as North America, Australia, and Middle East.

## WHAT HAS CONTRIBUTED TO ITS RAPID AND IMPRESSIVE SUCCESS?

Comments Managing Director Darragh Cullen: “There are many things that have come together to make the company what it is today, not least our staff and employees – from the shop floor to our sales people, to our marketing department and to our management team.

“We have some excellent managers here, some have been with us for a long time, others are relatively new, providing us with an excellent mix of management skills; it is good to bring in new people with expertise in different sectors who can provide a fresh outlook”.

“Our workforce is very loyal and everyone is proud to work here; we have a lot of committed people who believe strongly in the company and the brand we have created. They will go the extra mile for us and for our customers. We are not afraid of change. We don’t stand still, we are always moving forward, questioning our processes and procedures, always open to fresh ideas and suggestions, always flexible in our approach.”

Ever since those KMC Engineering days when the company was sub contracted to a number of major exporters and manufacturers, the management team has been good at keeping costs under control, keeping overheads to a minimum and moving forward in an efficient and productive way.

“Our people have always had a flair for good design and KMC Engineering provided us with a solid base to grow and evolve into EDGE Innovate. Our

customers are our sounding board in terms of new ideas and new products; we are very customer driven in everything we do,” says Darragh. “We have a strong marketing team both locally and internationally and consequently our brand is known and respected in many countries. We are not called ‘EDGE’ for nothing. We strive to give our customers an ‘edge’ in the marketplace over their competition.”

## AWARD WINNING

No one, then, perhaps should be surprised that this year has been somewhat special for the company as it was presented with the Queen’s Award for Enterprise recognising its excellence in International Trade for the second time, having won its first Queen’s Award in 2019, becoming only one of seven companies to achieve two such Queen’s Awards.

“We view this latest award as recognition of the hard work and resilience of all our stakeholders over the last three years, especially during the time of the pandemic. With staff suffering from covid, isolating and with enforced lockdown, it has been an extremely challenging period. I want to thank our entire team for their help during this time. To our suppliers who have been faced with their own difficulties, thank you for your support. To our customers who have had to deal with long delivery times and increased costs, thank you very much for your patience.”

“Given the sad passing of Her Majesty the Queen, the awards will always be treasured,” adds Darragh who earlier this year met the new King. “When we were invited to Buckingham Palace for the awards presentation, it was the then Prince Charles who hosted the ceremony, as he did back in 2019.







We mentioned earlier that EDGE Innovate is flexible in its approach to business – and that extends to its product designs; in fact, much of its equipment is produced with flexibility in mind. “Bringing new products to the market on a regular basis is very important, no more so than in the environmental sector where demands, standards and legislation are changing all the time,” explains Darragh, “which is why we are able to tailor existing products to specific customer requirements; being able to ‘tweak’ our equipment designs makes it a lot more efficient and cost effective for both us and the customer.”

“The big selling points for EDGE is the versatility of the machines we have in our portfolio, and being able to focus on a diverse range of applications, especially in the waste and recycling sector – from small operations to multi-nationals, we have equipment that can perform in a variety of different environments and tasks and meet different regional levels of legislation and standards.”

CONTINUED ON NEXT PAGE 

Of course, the company has a very proactive R&D department, constantly working on new designs and innovations, utilising latest technologies to do so. “R&D has always been an integral part of our business from the very beginning. At the moment, there is a big focus on electrification of equipment, but requirements differ from one country to another in terms of recycling needs and demand for carbon neutral products, so it is always a balancing act. Ultimately, I look forward to the day when there is no diesel powered equipment leaving our facilities.”

## DISTRIBUTOR NETWORK

Turning to the dealer network; that is the lifeblood of any company, comments Tom Connolly, territory sales manager: “Our partners across the world are hugely important. Currently, we have 50 dealers and partners around the world and we maintain and foster a strong positive relationship with all of them. We work as a team, which is another reason for our success.”

Tom has been with the company for over 15 years and has established solid working relationships throughout the dealer network. He is always seeking out new emerging territories and new partners who would be a good fit for EDGE Innovate and much of his time is spent abroad.



➔ CONTINUED

**ONGOING INVESTMENTS**

Three years ago EDGE Innovate embarked on an £8m investment plan to cope with growing demand for its products. A new paint shop and stores facilities have been added, increasing production capacity by 30% and a new Customer Welcome Centre is being established to house its ever-expanding sales, marketing and aftersales departments.

“The new centre will be well utilised as we are constantly welcoming customers here from all over the world, sometimes for product training, other times to let them see our production processes and to get to know them on a more personal basis.”

So, what does the future hold for EDGE Innovate? “We want to continue to grow at a controlled level, placing strong focus on product development, product support and service excellence. As I said, the only real difference between any business is the people who work in it and I believe we have the very best.” EDGE Innovate Managing Director, Darragh Cullen

**PROGRESSIVE & IMPRESSIVE TIMELINE**

**JUNE 2017**

EDGE Innovate claim ‘Exporter Award’ at prestigious Made in the UK Awards.

**NOVEMBER 2017**

FreeFlow 186 wins the “Waste Equipment Innovation” of the Year award from Sustainable Ireland.

**MARCH 2018**

EDGE Innovate picks up Deloitte ‘Best Managed Company’ Award.

**APRIL 2019**

EDGE Innovate is honoured with a Queen’s Award for Enterprise for International Trade.

**MARCH 2020**

EDGE Innovate launch two new high capacity waste shredders - VS420 and HS750 at CONEXPO in Las Vegas.

**MAY 2020**

EDGE Innovate release new track radial stockpiler – the EDGE TSR80.

**JANUARY 2021**

Launch of new SM186, a versatile wheeled mounted screener.

**FEBRUARY 2021**

EDGE’S new 37,500ft<sup>2</sup> factory began operating with the new facility housing a new stores area, a state-of-the-art paint shop and blasting facility.

**JULY 2021**

The New EDGE TRT620R, was launched into the market, a trommel offering superior screening.

**AUGUST 2021**

EDGE Innovate moved to a four day working week with no loss of pay for all production workers, the first manufacturing company in the region to do so.

**SEPTEMBER 2021**

EDGE Innovate announced as one of Ireland’s Best Managed Companies 2021 by Deloitte, achieving Gold Standard.

**NOVEMBER 2021**

Winner of Manufacturer of the Year 2021 at the Mid Ulster Business Excellence Awards.

**JANUARY 2022**

Launch of the TRM831, EDGE’s largest mobile trommel to date, at America’s leading compost conference COMPOST 2022.

**MARCH 2022**

The EDGE FTS Radial organic feeder stacker launched, setting new standards in the turning, blending and stockpiling of organic material.

**APRIL 2022**

EDGE Innovate was honoured with a prestigious Queen’s Award for Enterprise, for the second time, having won our first Queen’s Award in 2019.

**MAY 2022**

Winners of the Manufacturing Excellence Award Large Company at the inaugural Business Eye Family Business Awards.

**MAY 2022**

EDGE made it onto the 2022 Belfast Telegraph Top 100 Companies in Northern Ireland for the first time.

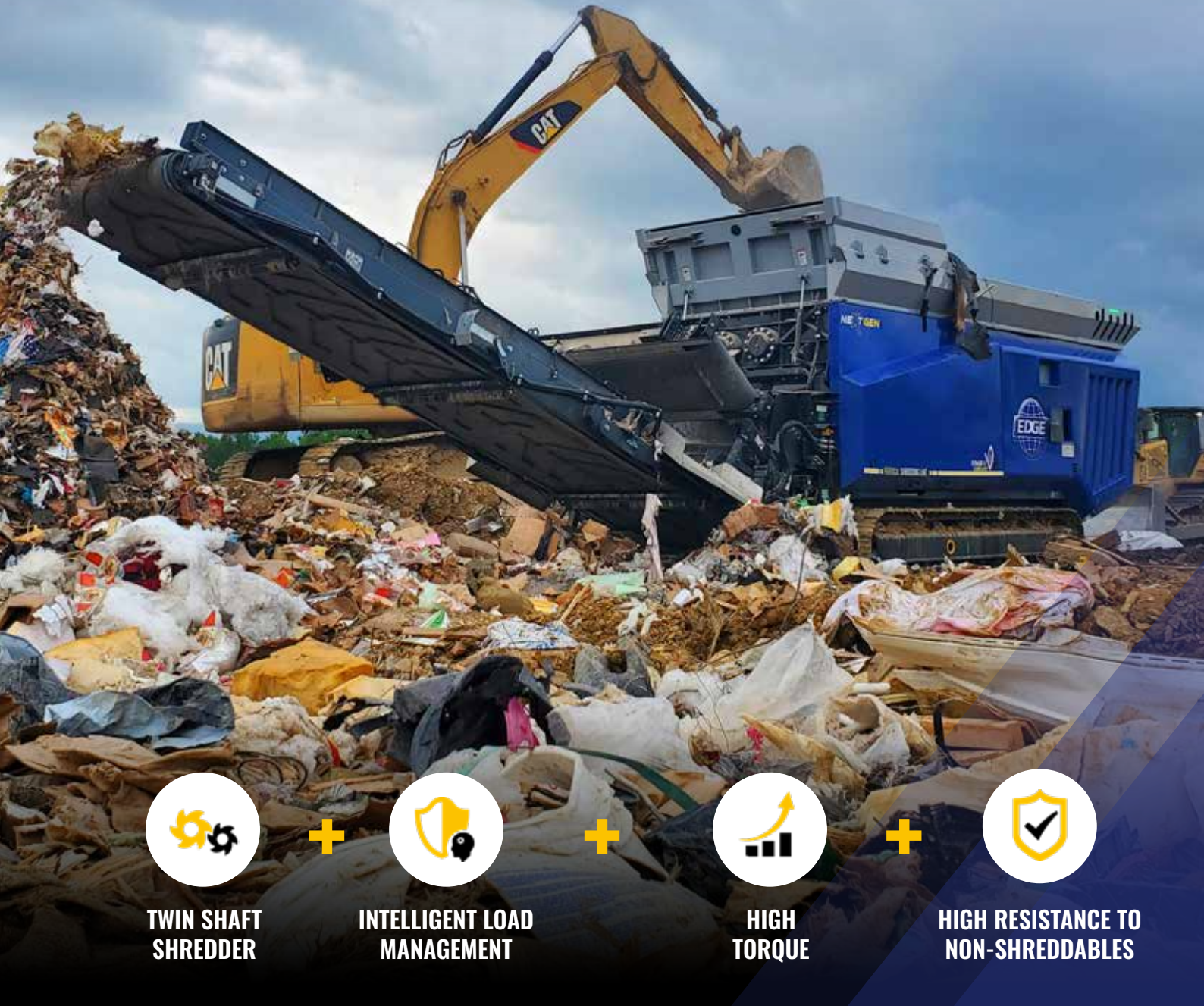
**JULY 2022**

Launch of the new VS420E Hybrid from EDGE Innovate offering significantly reduced CO2 production, reduced operating costs, reduced servicing and a higher percentage uptime for its operator.



INTRODUCING EDGE INNOVATE'S

# NEXT GENERATION WASTE SHREDDER



**TWIN SHAFT  
SHREDDER**



**INTELLIGENT LOAD  
MANAGEMENT**

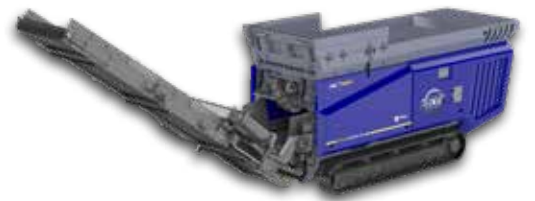


**HIGH  
TORQUE**



**HIGH RESISTANCE TO  
NON-SHREDDABLES**

EDGE Innovate has taken decades of designing, manufacturing and commissioning of industrial waste shredders to create their next generation waste shredder. The EDGE VS420 is a high capacity, high torque twin shaft shredder that is ideal for the processing of a large array of materials including; green waste, MSW, C&D waste, biomass and end of life tyres.



#SHREDDEREVOLUTION

# VS420

VERTICAL SLOW SPEED SHREDDER



[info@edgeinnovate.com](mailto:info@edgeinnovate.com)

[www.edgeinnovate.com](http://www.edgeinnovate.com)



**IRELAND  
BEST  
MANAGED  
COMPANIES**

Gold  
Standard

# WASTE RECYCLER WITH AN EDGE





**When Bloomfield Composting needed to invest in a new shredder and trommel for their 18 acre waste and recycling facility at Cannock in Staffordshire they turned to EDGE Innovate, and not without good reason.**

Bloomfield Composting was established about 15 years ago and takes in green waste and wood and forestry waste from a number of sources to produce not only PAS 100 compost and BS3882 multi-purpose topsoil, but also biofuel and pellets used in power stations and for other applications.

**Nigel Gill became Managing Director of Bloomfield Composting just over a year ago, having a wealth of experience in the waste recycling and demolition sectors, working for some 30 years alongside David Humphries of the Humphries Holding Group of companies.**

Today, as an independent, privately owned and managed company, Bloomfield Composting's facilities are considered to be among the best in the country, taking in general green waste from local authority civic amenity sites, wood waste from demolition sites and forestry waste from tree surgeons and arboriculturalists.

EDGE Innovate supplied the company with an EDGE VS420 slow speed shredder and an EDGE TRT620R tracked trommel which have been earning their keep for some months now without any hitches.

Featuring an intelligent operating system which incorporates tramp metal protection that provides the ultimate protection from contaminants and prevents asset damage, the fuel efficient EDGE VS420 is a high capacity, high torque twin shaft waste shredder that is ideal for the processing of a large array of materials including green waste, MSW, C&D waste, biomass and end of life tyres.

Its versatility can be attributed to the fact that a number of shredding programmes and chamber configurations are available. At its heart are twin synchronised, high torque shredder shafts which can be customised to suit a customer's exact application and desired product piece size. EDGE's twin shaft design provides exceptional material intake, ensures less wear, promotes self-cleaning and prevents material wrapping even in the toughest of applications, as Bloomfield Composting quickly discovered.

### **A SHREDDER THAT IS ROBUST, OPERATOR FRIENDLY VERSATILE AND FUEL EFFICIENT**

"After discussing our specific requirements with the team at EDGE Innovate, we took delivery of the VS420 shredder early last year and added the TRT620R trommel several months later," says Nigel Gill. "We needed a shredder that was robust, operator friendly, versatile and efficient to process a variety of wood waste, a lot of which contained metal such as nails, hinges and door handles. It also needed to break down other difficult waste like tree stumps and roots before putting the material through the high speed shredder, and the VS420 fits the bill perfectly with its different programme options and settings.

CONTINUED ON NEXT PAGE 





EDGE VS420

CAT



WATCH VIDEO



“The operator likes the VS420 because its design is not overly complicated, and it can be controlled remotely from the cab of his excavator, so it is essentially a one man operation; he actually runs two shredders and a screener all from the remote. By putting the shredder into reverse after so many turns, it helps keep the rotors clean and if they are kept clean, you will be cutting back on power and using less fuel, so it is very efficient.”

He added that with easy access to the engine compartment and ground level access to all the filters, routine daily maintenance checks can be carried out quickly, resulting in minimal downtime.

Complementing the VS420 shredder is the EDGE TRT620R trommel. With its heavy-duty construction design and high manoeuvrability, it has proven to be perfect for Bloomfield Composting as it is well suited to handling biomass, soil and compost, as well as construction and demolition waste.

“EDGE Innovate were very accommodating when we asked for some modifications to the trommel,” says Nigel. “We don’t tend to shred the kerbside collected green waste when it comes into our facility, it goes straight into windrows, but there tends to be quite a lot of oversize now and again and it was catching on the chute, so we had changes to the system to compensate and it is performing brilliantly.”

## **TROMMEL HAS THE ABILITY TO TRACK, SCREEN AND STACK MATERIAL SIMULTANEOUSLY**

The EDGE TRT620R has a unique feature of a remote operated, 180° radial fines conveyor which has been combined with the ability to track, screen and stack material simultaneously. This functionality allows for enhanced production capacities, reduced material handling and the ability to create large radial or windrow stockpiles.

The positioning of the radial fines conveyor whether at 0° or 180° allows the TRT620R to have the same small footprint of a side conveyor trommel format but with a much superior product separation and reduced material contamination. Another notable bonus is that it can accept several other trommel manufacturers’ drums, enabling operators to take full advantage of their existing drum stock. A quick and simple drum exchange procedure is facilitated via an innovative sliding feeder design and double sided 180° swinging drum doors allowing the screening drum to be exchanged in a matter of minutes.

“We hadn’t dealt with EDGE Innovate before acquiring these two machines, but they’ve been very supportive, although to be honest we haven’t had any issues since putting the shredder and trommel to work; they’ve been reliable and have been performing very well,” says Nigel.



# HIGH CAPACITY COLORING



**INTELLIGENT LOAD  
MANAGEMENT**

**HIGHLY EFFICIENT  
DELIVERY SYSTEM**

**MATERIAL DETECTION  
PREVENTS WASTAGE**

**HIGH CAPACITY  
500yd<sup>3+</sup> /HR**

With unmatched production rates and high efficiency; the EDGE ColorPRO offers operators the highest return of any coloring system available on the market. A self-contained portable coloring system, the EDGE ColorPRO is ideal for those operators seeking a large capacity, coloring solution.



[info@edgeinnovate.com](mailto:info@edgeinnovate.com)

[www.edgeinnovate.com](http://www.edgeinnovate.com)



#UNMATCHEDPRODUCTION

**EDGE COLORPRO**  
PORTABLE COLORING SYSTEM



**BEST  
MANAGED  
COMPANIES**

Gold  
Standard

# EDGE COLORPRO DOUBLES PRODUCTION FOR A FORMER MARINE'S RECYCLING OPERATION

**You might be surprised to know a 25-acre recycling yard in an industrial area of Wilmington, N.C., filled with big equipment processing giant piles of old trees and vegetation, is also a model of neatness and efficiency.**

In the case of Wilmington's American Property Experts (APE), all the equipment not in use at the recycling business is clean and lined up perfectly. Even the huge piles of unprocessed plant waste are smartly arranged.

That's due to APE being owned by Jason Thompson, a former Marine given to crisp efficiency and orderliness that he believes is one factor in the success of his dynamic company. His agile business sense has fashioned APE into one of North Carolina's largest wood debris recycling companies.

American Property Experts is a 25 acre recycling yard based in North Carolina. The business employs 22 people across two locations in the coastal city, from which it provides a variety of services, including processing vegetative debris for fuel, creating bulk mulches and soils and recycling old concrete into stone and gravel.

## APE OFFERS TWO MAIN PRODUCTS

At its core, APE takes in huge amounts of vegetative waste from landscapers and construction site clearances before processing the raw material using its stable of machinery. At APE's south Wilmington location alone, Thompson said, the company gets 150 to 200 trucks full of tree and plant waste per day. "Then, we sort it, grind it and sell it either as a boiler fuel, which was my main business for 20 years, or into colored mulches, which has been our

secondary product for the last several years," he explained. "We call ourselves a comprehensive vegetative recycling facility." Besides the plant waste collected through state, county and local municipal contracts, APE also takes in storm debris, too.

"Every year for the past 20 years we have been the preferred Federal Emergency Management Agency [FEMA] site for storms in this area and, unfortunately for this region, hurricanes have been a common occurrence," he said. "But they also generate big business for me."

After conversations with his boiler fuel customers and their intention to phase out this type of fuel, APE quickly realised their need to grow the colored mulch section of the business. To process the tremendous amount of raw vegetative material APE takes in to make mulch, the owner Jason Thompson carefully selected equipment he believed would create products that meet his specifications. APE operate grinders and trommels associated with mulch production but for the coloring of the mulch he turned to the EDGE ColorPro.

***"Then, I bought the most impressive mulch coloring machine I have ever seen in my life, the EDGE ColorPro," he said. "We bought it a few months ago and went from producing 250 to 300 yards of colored mulch an hour to now being able to make 750 yards with that machine."***





## THE PROCESS

After the grinding process is complete, APE trucks move the material to a processing area where it moves through the EDGE dye trommel and comes out as either black, chocolate, or red mulch.

The quickness and efficiency of the ColorPro is boosted through a 5,000-gal. water tank, buried in the ground next to the color trommel so it can operate with an unlimited water supply. Fitted with a unique material detection system to prevent colour wastage, the ColorPro is a highly efficient mulch dyeing trommel that produces a high-quality end product at the lowest cost per yard!

"I looked at a lot of different machines in five years and I am a big believer that the best technology and the best efficiency gives you the best results," Thompson continued.

***In APE's first year they produced between 25,000 to 30,000 yards of colored mulch. In 2020 that figure will have increased to 150,000 yards. All made possible by higher market demands and increased production capacity thanks to their EDGE ColorPro Dye Trommel.***

## LOCAL SUPPORT

The EDGE unit was purchased by Thompson through Hills Environmental, a division specifically designed to meet the needs of crushing, recycling and organic material handling customers. "The service and support that I got from Hills Environmental was outstanding," Thompson said.

Indeed, Hills Environmental went above and beyond to get the EDGE trommel into Thompson's hands.

"It was terrible timing that I needed my machine delivered and set up during the earlier part of the coronavirus, but Hill's made that work for us," he said.



## ALL SQUARED AWAY

While giving a tour of APE's Sunnyvale Drive location, Thompson proudly pointed out how his sense of organization, no doubt sharpened during his time in an elite branch of the military, has helped to make his company more efficient and ready for the unexpected.

"You can see my Marine Corps background and all my uniformity — every truck is the same, every trailer. That way everything is nice, neat and squared away. We are totally self-enclosed here — our own fuel, diesel and gas — so if a hurricane hits, we have enough to sustain us."



**WATCH VIDEO**

# THE EDGE VS420 TRIED, TESTED & PROVEN

***With decades of knowledge in the design, manufacturing and installation of mobile waste shredders, it is no surprise that EDGE Innovate's VS420 twin shaft shredder is quickly gaining a reputation as a world class shredder.***

With its high capacity, reliability and low running costs, the EDGE VS420 is proving to be an excellent shredding alternative to what is currently on the market. With several units already installed in USA; many American waste management companies have been quick to recognise the operational benefits of the VS420 with its capabilities and versatility being proven in wide range of applications from municipal skip waste to wood waste.

## **POPULAR DESIGN FEATURES**

The VS420 offers operators a host of design features such as an intelligent load management and a VS Status Alert System which combine to ensure the efficient loading of the shredder leading to consistent high throughputs with minimal downtime. EDGE's "track and shred" functionality compliments this combination, allowing the VS420 to be repositioned without the need to stop shredding.

Hydraulic hopper extensions as standard provide operators with greater loading flexibility and a larger target area minimising spillage and improving operational safety. This is supported by a large capacity tipping hopper with remote functionality which aids with the feeding of material to the shredding chamber, it is particularly beneficial for feeding of elongated feed stocks. A hydraulic height adjustable powerful twin pole magnet fitted to the discharge conveyor ensures the recovery of ferrous metals from the waste stream.

## **PERFORMANCE**

The high material throughputs achievable by the VS420 is made possible thanks to a set of 2m long, high torque shredder shafts that can be customised to suit a customer's exact application and to create their desired product piece size. EDGE Innovate offer a wide range of tooling options and chamber configurations to ensure that the VS420 is set up to achieve the best results for its operators. **EDGE's twin shaft design provides exceptional material intake, ensures less wear, promotes self-cleaning and prevents material wrapping even in the toughest of applications.**





The EDGE VS420 is powered via a Caterpillar C9.3B Tier 4 Final / Stage V ACERT engine with a power rating of 310Kw (420HP). Caterpillar's SCR technology reduces engine emissions and provides a robust and economical solution for EDGE's customers. Fuel consumption is 9% less than comparable Stage IIIB engine options.

## OPERATOR SAFETY & MAINTENANCE

The VS420 has been designed around the operator to ensure enhanced operational and maintenance safety. For example, EDGE's uplifting power unit, radiator and chamber doors ensure superior maintenance access which is complimented by the VS420 "One Point" service area which enables daily maintenance checks to be done easier and quicker. Operators can access fuel and adblue tanks, air filters and oil gauge; all from a single vantage point. The EDGE VS420 also offers added remote functionality as standard. All major functions on the VS420 including tracking, tipping hopper, shafts speed, engine speed, shaft reverse cycle, discharge conveyor working angle and magnet position can be remotely operated from a safe distance of up to 100m (328') or in the comfort of the loaders cabin.

**EDGE Innovate's next generation shredder designed for high capacity shredding, reliability and low operational costs.**

The shredder chamber is controlled via the latest EDGE Operating System (EOS) which is designed for improved user-friendly controls and gives operators greater control over program settings, shaft speed and reverse cycles. The VS420 operating system provides 5 factory set shredder programs for demolition wood, general waste, green waste, mattresses, and compost. There are 3 additional program settings that can be tailored by the operator to suit their specific input materials.



**WATCH VIDEO**

**EDGE INNOVATE**  
**PHOTO COMPETITION**





**Aidan McCloskey, Promac Group, USA - EDGE FTS75 Mulch Master**

The winning entry for this years photo competition illustrates the “Deep Stacking” capabilities of the EDGE FTS75 Mulch Master. The EDGE FTS75 Mulch Master is being utilized to aerate large windrows of finished mulch and compost products. The hopper feeder provides the best method to thoroughly aerate products, preventing fires and souring. It offers the most effective, fastest, cheapest and safest method for stockpiling of organic material. The FTS75 Mulch Master has allowed the company to maximize their space and to safely store large volumes of finished product.



**Brent Stoker, Simply Natural Compost, USA**

With blue skies and a high throughput, this image sent in by Brent Stoker captures the production capacity of the EDGE TRM622. The impressive stockpiling ability of the 180° radial fines conveyor is also evident. Seen here screening dairy compost with a 1/2 inch punch plate with spiral drum making a fine material for cow bedding in southern Idaho.

**Craig Davis, Waste Process Consultant Far Above, Australia**

The EDGE SLAYER XL versatility was put to the test on this Australian site as it was utilised for the shredding of various materials. Seen here shredding plastic piping for further upstream processing.



**Tom Neville, Crushing Tigers, USA**

This excellent photo sent in by the Crushing Tigers team shows an EDGE TRT620R trommel screen processing a mature compost windrow in Texas. Fitted with a 1/2" punch plate, spiral drum, the EDGE TRT620R is creating a 1/2" minus fines product. With superior stockpiling ability, efficient screening, intelligent load management and quick drum exchange; the EDGE TRT620R is your perfect screening partner.

**Chris Quinn, Promac Group, USA**

The largest mobile color trommel on the market, the EDGE ColorPro is seen here pumping out 500 yards<sup>3</sup> per hour of colored mulch. The EDGE ColorPro dye trommel is the ideal solution for satisfying the production demands of the largest colored mulch producer or for those producers that operate across multiple sites.



**Dan Flack, Red Knight 6, UK**

Eating it's way through tonnes of household waste, the EDGE VS420 is being utilised to feed material to a sophisticated waste recovery plant. Processing up to 50TPH, the VS420 is resizing material down to 300mm (11"). Shredded material passes onto a manual pick team that recovers different grades of bottles HD and PET, various metals both ferrous and non-ferrous, along with different papers, fibres and films.



EDGE's 2022 Photo competition invited people to share photos of their EDGE Innovate machinery whilst they work for a chance to have their photo featured on the EDGE Innovate CONEXPO 2023 Magazine. Capturing EDGE units working across the globe from New Zealand, Oman to Utah the Top 10 Photos selected by the judging panel are now revealed. Congratulations to all those entrants selected.



**John McGuiness, FOCUS enviro, Australia**

Creating "Deep Stacks" of compost, this EDGE FTS65 Mulch Master has been described by its Australian owners as the new break through machine in their Organic operation. The FTS65 Mulch Master has allowed the waste management company to increase their ability to turn material in comparison to what was achievable with their previous set up.

**Jared Reiley, USA**

The EDGE MS80 seen here working in Utah, USA is stockpiling sized aggregate to a height of 36'. Designed to work in conjunction with: screeners, crushers, grinders and washing equipment, the radial stockpile feature on the MS-Series enables impressive stockpile capacities whilst reducing the double handling of material.



**Tommy Hagström, Hummeltorp Sverige AB, Sweden**

A fleet of EDGE mobile conveyors and feeders, all electric driven are utilised by Hummeltorp to convert contaminated soils. Hummeltorp is part of the growing circular economy, where materials and products are reused instead of being dumped in a landfill. 96% of all material received by Hummeltorp are converted to create new products, thanks to careful origin control, technical know-how, efficient procedures and smart logistics.

**Diasey Thor-Poet, EQUIP2, New Zealand**

Working its way through hundreds of tonnes of construction and demolition waste, the EDGE Slayer XL is proving it's worth in New Zealand. This STAGE V, fuel efficient waste shredder is reducing demolition waste down to minus 250mm (9") at a rate of 40tph.



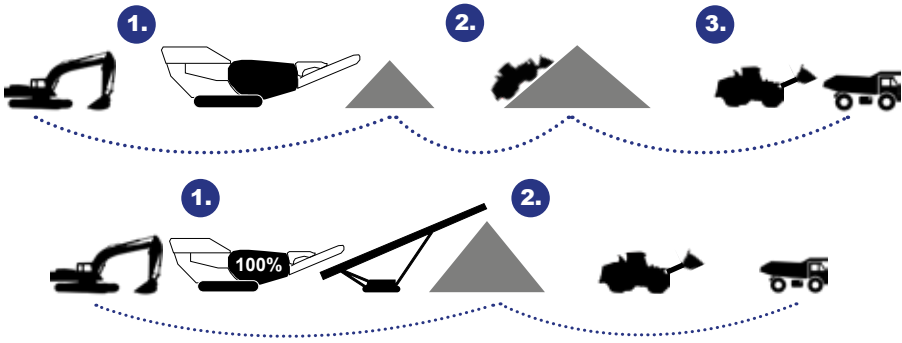
**Mohammed Iliyas Namoji, Khimji Ramdas Group (KR Group), Oman**

Smiles all round as EDGE's Oman distribution partner completes the commissioning of a fleet of mobile and hook lift Slayer XL waste shredders to Be'eh Oman. The Oman Environmental Services Holding Company (be'ah), has formalized a deal to supply the Oman Cement Company with 30,000 tonnes of scrap tyres as a tyre derived fuel (TDF).

# STACK MORE FOR LESS



# STOCKPILER OPERATIONAL BENEFITS



**MATERIAL HANDLED  
33% LESS**

## € CAPITAL EXPENDITURE

STACKER COSTS  
**>50% LESS**  
TO PURCHASE

## FUEL EXPENDITURE

25 Ltr/Hr  
**OVER 50%  
LESS IN FUEL COSTS**  
12 Ltr/Hr

## LABOUR

**85% LESS**  
IN OPERATOR COSTS

## MAINTENANCE

**80% LESS**  
EXPENSIVE TO MAINTAIN  
THAN WHEEL LOADERS

## MATERIAL TRANSFER

**500TPH MORE**  
MATERIAL STOCKPILED WHEN  
UTILISING STOCKPILERS

## STOCKPILE HEIGHT

**GREATER STORAGE CAPACITY**



## HEALTH & SAFETY

Increase site safety by reducing traffic levels and eliminating the use of loaders stockpiling material.



## ENVIRONMENTAL

With a reduced dependency on wheel loaders and reduced number of moving vehicles on site, operators will benefit from reduced noise, dust and engine emissions.



## PRODUCTION

Increase operational production rates. Excavators/ wheel loaders are now free to concentrate solely on the continuous loading of material to crushers, screeners and delivery trucks.



## MATERIAL QUALITY

Improved material quality by reduced compaction, degradation, segregation and contamination through compacting and crushing.

# CUTTING COSTS FOR A CRUSHING AND SCREENING SPECIALIST

Operating throughout the island of Ireland, Brick & Block has built up a widely respected reputation as a dedicated specialist offering a range of services – from contract crushing and demolition to site clearance and excavation. With a wide variety of clients, including landowners, developers, and quarry operators, and fully insured through Constructionline and CSR registered, the company was first established by John Minish in 1988.

As its business expanded, the company, which is based at Scarva in County Down, Northern Ireland has invested heavily in plant and machinery, the latest acquisitions being a fleet of EDGE TS80 tracked stackers which are earning their keep on a variety of projects across the country.

It has been a great investment, as John explains: “We are very happy with the design and build quality; it was also competitively priced which made it even more attractive. As a growing business, investing in new plant and machinery is an ongoing process,” says John, who takes a fully focused ‘hands on’ no nonsense approach to the business. “Providing a service that meets and exceeds our customers’ requirements is our top priority, so having the right equipment to do so is essential.”

## OPERATIONAL ADVANTAGES

So, what does he like about his new acquisition? “There were three things that influenced my decision to buy the EDGE stockpiler – to cut our fuel bill, to become more competitive as it eliminates the need for a loading shovel and to reduce manpower,” says John, whose attention was drawn to EDGE Innovate last year with the launch of the EDGE TSR80, an 80ft long track mounted conveyor with radial stockpiling functionality.

“The stackers have made my operation much more productive, efficient and cost effective. With the EDGE Innovate stockpilers I can, on my own, do a weeks crushing work up to 7,000 tonnes using less than half the diesel that a shovel could burn through a day”.

John uses his EDGE Innovate stockpilers along with a Sandvik QJ241 mobile crusher, a cone crusher and 3 deck screener. “The crushing and screening plant perfectly complement each other on many of the projects I am involved in. The stockpilers are easily transportable; they simply fold up and can be moved on a low loader, which is ideal as our work regularly takes us to various sites up and down the country.”

CONTINUED ON NEXT PAGE 





**WATCH VIDEO**



**➔ CONTINUED**

**EDGE TRACK STACKER FEATURES**

Taking a closer look, the EDGE TS80 tracked stockpiler, a versatile conveyor that can be used in a wide range of applications, boasts an array of design features including a highly efficient hydraulic drive system with variable belt speed, low fuel consumption, adjustable feed height and variable discharge height. Designed to work in the harshest of environments, it can be continually fed by any crusher, screener or shredder with a rapid set-up time and impressive stockpiling capacities.

As John mentioned, moving it around the work area is easy thanks to its hydraulic driven crawler tracks, while its hydraulic head and tail fold for quick and efficient transport between sites.

Other notable features include:

- Hydraulic adjustable feed height reduces impact and dust creation.
- Eliminates material segregation and ensures stockpile meets required specification.
- Discharge height of up to 10.8m (35'9")
- Create conical stockpiles of up to 742m<sup>3</sup> (970yds<sup>3</sup>)
- Power source options available: Diesel /Hydraulic, Direct Electric, Diesel Genset.

“The new tracked stockpiler is a significant investment for us, but it is already paying dividends,” says John, who adds that being able to deal direct with EDGE Innovate was a bonus “The whole process was hassle-free and the service and support could not be faulted.”

**MATERIAL HANDLING RANGE**

EDGE Innovate’s range of material handling equipment offers operators an efficient, reliable and robust material handling solution. The EDGE brand name is intrinsically linked to the manufacturing of tracked and mobile stockpilers, feeders and radial track stockpilers, all of which have been designed to improve productivity and mobility whilst minimising operator costs. EDGE Innovate offer the most cost effective and efficient way of stockpiling or transferring material on the market today.





# INNOVATIVE MATERIAL HANDLING & RECYCLING SOLUTIONS.

Over 30 years experience in the design and manufacturing of Material Handling and Recycling equipment. Our products can be seen working in over 70 countries in a wide range of different industries with the brand being supported via a 50 plus strong distributor network.

**Shred, Screen, Separate, Stockpile & Size a vast array of materials with the help of EDGE Innovate.**



INNOVATIVE MATERIAL HANDLING & RECYCLING SOLUTIONS



info@edgeinnovate.com

www.edgeinnovate.com



**BEST  
MANAGED  
COMPANIES**

Gold  
Standard

[www.edgeinnovate.com](http://www.edgeinnovate.com)

# **SECOND QUEEN'S AWARD FOR EDGE INNOVATE**

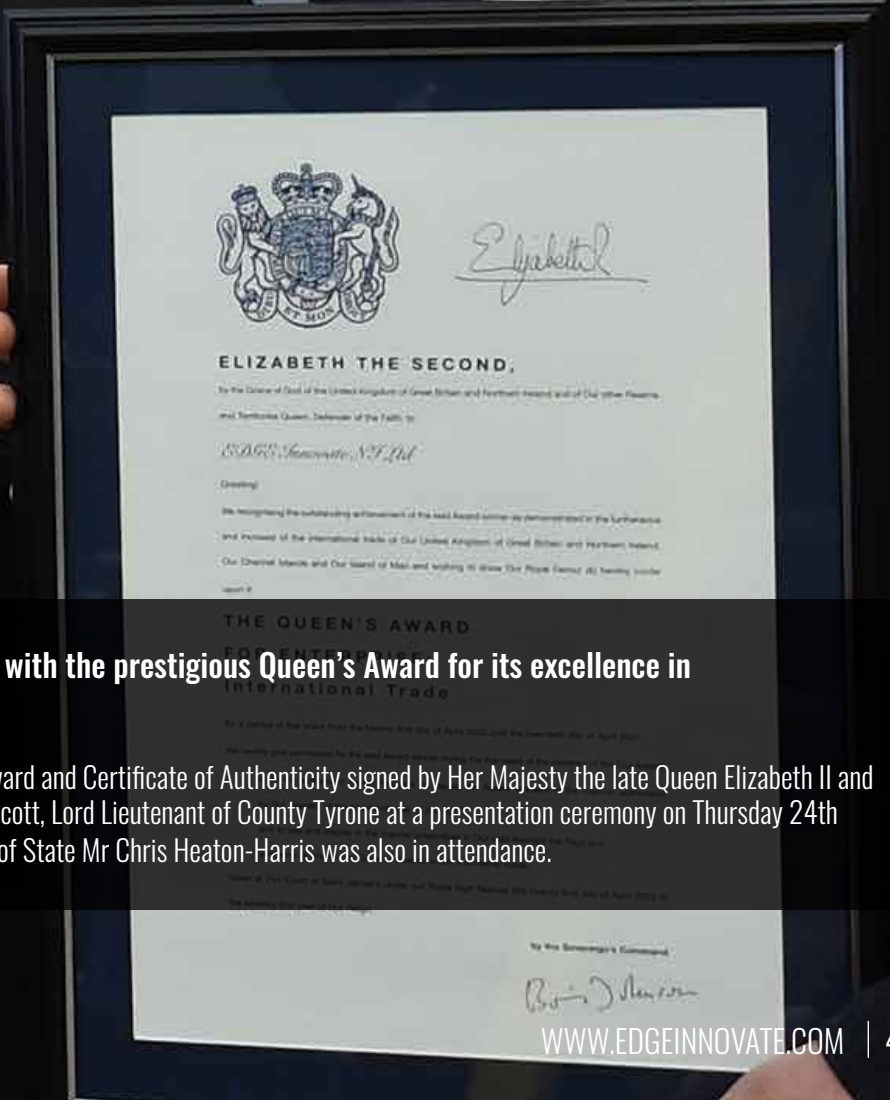






**EDGE Innovate has been presented with the prestigious Queen's Award for its excellence in International Trade.**

The Irish company received their crystal award and Certificate of Authenticity signed by Her Majesty the late Queen Elizabeth II and former PM Boris Johnson from Mr Robert Scott, Lord Lieutenant of County Tyrone at a presentation ceremony on Thursday 24th November. The Northern Ireland Secretary of State Mr Chris Heaton-Harris was also in attendance.



## **EDGE Innovate now joins an elite group of companies to have won multiple Queen's Awards having won their first Queen's Award in 2019.**



Commenting on the visit, Secretary of State for Northern Ireland, The Rt Hon Chris Heaton-Harris MP said:  
**“EDGE Innovate is a brilliant example of the expertise and talent that exists in Northern Ireland’s manufacturing industry and how this industry is helping to connect Northern Ireland to the world. I’m delighted to see the company received the Queen’s Award for Enterprise today, recognising its outstanding success in international trade, with EDGE exporting to over 70 countries across the globe.”**

Employing 200 people directly, the family owned company was set up in 2008. The company develops, manufactures, markets and exports sophisticated technologies for the bulk material handling and recycling industries. Currently, EDGE Innovate exports 96% of their products outside of the United Kingdom from its 250,000ft<sup>2</sup> manufacturing facility within Co. Tyrone. The family run brand has developed a strong presence throughout overseas markets such as North America, Australia, and the Middle East.

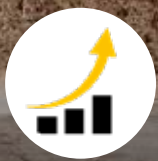
**“The team at EDGE Innovate are absolutely delighted to be presented with our latest Queen’s Award for Enterprise. This award is recognition of the hard work and resilience of all our stakeholders over the last three years, especially during the time of the pandemic. I want to thank our entire team for their help during this time. EDGE is a growing organisation and working closely with all our stakeholders in the context of mutual respect and teamwork has allowed for the growth the company has experienced over the last three years. Continual growth during the pandemic is a remarkable achievement and a testament to who we all are and how we conduct ourselves. We accept this award as recognition of that success”** Darragh Cullen, EDGE Innovate Managing Director.

EDGE Innovate successfully exports its products to over 70 unique countries via a 50 strong distributor network. The company has experienced exceptional growth with exports rising from 85% in 2016 to 94.4% in 2020. Having just recently opened a new 40,00ft<sup>2</sup> facility in 2021, further expansion plans have just commenced in response to ever increasing market demand for their products.





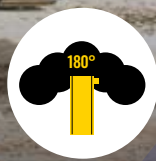
# SMART. EFFICIENT. SEPARATION



**SUPERIOR  
SEPARATION**



**INTELLIGENT  
LOAD MANAGEMENT**



**RADIAL FINES  
CONVEYOR**



**ECO-POWER  
SAVING**

The EDGE TR622 Trommel Series combines high production rates with ease of use in a robust, portable and versatile screening plant that is ideal for applications such as top soil, recycling, composting and is proven in construction and demolition waste.

Available as a track, wheel or static chassis configuration.



[info@edgeinnovate.com](mailto:info@edgeinnovate.com)

[www.edgeinnovate.com](http://www.edgeinnovate.com)

#BESTINCLASS

**EDGE TR622**  
**TROMMEL SERIES**



**BEST  
MANAGED  
COMPANIES**

Gold  
Standard

# **A GREEN WASTE GAME CHANGER FOR VEOLIA, AUSTRALIA**



EDGE Innovate alongside our Australian distribution partner, FOCUS enviro is supporting the machinery requirements of Veolia's green waste processing site at Eastern Creek, in New South Wales with the installation of an EDGE TRT622 trommel and FTS Mulch Master. Site Supervisor Teri Te Whiu explains the immediate impact the machines have had.

**The incorrect disposal and storage of green waste is a widespread issue in the waste sector, necessitating the need for alternative forms of processing and treating of green waste. Veolia's Eastern Creek site, in New South Wales, uses modern technology, machinery and skilled operators to provide sustainable outcomes for the local supply of green waste. Teri Te Whiu, Site Supervisor says the operation is helping to establish a circular economy, a priority area for Veolia but one which is still an emerging market.**

"We receive green waste material which we then recycle into top dresses and garden mixes and then distribute back to the community," Teri says. "These products are mainly coming from community parks, councils and transfer stations, as well as landscapers." Teri says the Eastern Creek green waste service not only diverts materials away from landfill but also reduces the volume of methane gas released into the atmosphere in a double win for the environment

Once received, green waste is sorted on site at the Eastern Creek picking station. It is here that contaminants such as paper and plastic are removed, to enable efficient processing. Kerbside collections are also received at the site. Teri says it is at local council kerbside collections that green waste can become contaminated. She says this contamination, in many cases, can be attributed to a lack of knowledge surrounding the correct disposal of green waste. "Education is proving to be effective for streams such as cardboard, plastic and FOGO, but there is still more that I believe can be done to educate the community on the importance of responsibly processing green waste. "If there was a greater understanding it would change the whole process. We spend a huge amount of time sorting through rubbish at our picking station."

## THE IMPACT OF COVID-19

Teri says the facility came under greater pressure in 2020 during the COVID-19 pandemic. She believes that an increase in participation in mowing of lawns, gardening and tree maintenance during COVID-19 lockdowns led to a significant rise in green waste volumes received at the facility. "The demand placed on our facility hit us hard and fast," she says. "The tonnage of material which was coming in increased substantially. We also had to take in products from nearby transfer stations so they could sustain their operation." The influx of green waste materials also placed greater pressure on the storage capacity of the Eastern Creek site. New South Wales Environment Protection Authority regulations meant that stockpiling was limited at the site. Teri says the culmination of these factors meant efficiency was paramount. "One of the biggest challenges for our operation is limitations on stockpile heights. Currently we are only able to stack materials up to four metres," Teri says. "Once we did start receiving larger amounts, the four-metre restriction put pressure on the facility. "With this large amount coming in there was also the risk of fires due to the large amount of stockpiling. Processing efficiency was definitely an important aspect."







➔ CONTINUED

## GREEN WASTE PROCESSING UPGRADES

Teri says it was the culmination of these factors that led management to look at acquiring new machinery. An infrastructure update was also required to support the skilled workforce needed to process material quicker, reducing downtime at the site. “Mid 2020 was when we first started looking for machines,” Teri says. “We had just completed a round of organics processing, which allowed us to have more room on site to begin processing larger sales and composting orders. “After the first surge of COVID-19 we realised that it would be better to have a proactive approach. So, I was looking for a machine which would alter our actual footprint on site, to satisfy our needs,” she says.

It was during this period that Teri came across EDGE Innovate’s FTS65 Mulch Master. The FTS65 Mulch Master encompasses a bespoke hopper complete with a forward/reverse auger which it combines with a high speed discharge conveyor. Teri says the introduction of an FTS65 Mulch Master at Eastern Creek has added greater flexibility to the site’s operation. “The FTS65 Mulch Master is the new break through machine in our Organic operation”. The FTS65 Mulch Master has allowed us to increase our ability to turn material in comparison to what was achievable with the plant we currently operate. Its design provides optimum aeration of feed stock resulting in a dryer final product.

“For me, it gives me the ability to manage run-off and leachate better. It really contributed to our ability to adhere to EPA regulations on site,” she says. “The throughput on the machine is also very fast.” Teri says a

windrow turner machine which was elevated and on tracks was previously used at the site. The windrow turner requires a concrete hardstand and windrows need to be a certain width, height, and size. In contrast, the FTS65 Mulch Master is designed for quick and easy transportation, while its unique hopper design ensures 100% of feed stock sees the turner. “The Mulch Master enables us to have greater mobility in our operation, so we are able to drive that machine into the windrow, rather than taking time to displace the machine like the windrow turner,” Teri says. “It greatly reduces downtime”.

## AN EYE CATCHING FEATURE

Teri says that purchasing a second machine from FOCUS Enviro was not planned. But when she and her team went to learn more about the EDGE FTS65 Mulch Master, another product caught her eye. “Initially when I went to FOCUS Enviro, I was going to have a look at the FTS65 Mulch Master, but we also came home with a TRT622 Tracked Trommel,” she says.

“When we got there, we were shown the 180° radial stacker on the TRT622 Tracked Trommel. At that point we decided to go with that product as well. I was immediately sold on that feature alone.” The TRT622 offers up a number of beneficial features including a unique load sensing hydraulic drive system, eco-power saving functionality which automatically reduces engine speed when material is not detected and a user-friendly control panel to suit varying applications. The TRT622 Tracked Trommel can process a wide range of waste streams, including C&D, industrial and skip management.





Its 22-foot-long drum enables the TRT622 to produce a much higher capacity throughput to the trommels we are used to; with average production rates of 100 tonnes per hour being achieved. The longer trommel barrel also results in the material spending more time screening so less oversize material carries over to the fines product. In turn, this means less material having to be reprocessed so less double handling. The screening angle of the TRT622 Tracked Trommel is adjustable, again providing added flexibility for operators. Teri says the size and remote capability of the machine are also standouts. “The Tracked Trommel itself is actually larger than the other trommels we have on site,” she says. “The remote stacker was another selling point for me. We have stackers on wheels at the site which we move with loaders. Once I saw that this product can be accessed remotely, while our workers are inside their loaders, filling the screen itself, for me that was a game changer.”

Teri adds that ease of operation is an essential pre-requisite, which both machines comfortably satisfy. “The machines on our site need to be user friendly. Our operators need to be able to look at a machine and understand its basic functions. These machines are very straight forward,” she says. “We have a large number of machines at this site, and the EDGE products have performed as good, if not better, than anything else we have in use out there.”

### GREEN WASTE EQUIPMENT SUPPORT

Teri says that FOCUS Enviro “is never too busy to help” when it comes to modification and maintenance requirements of the machines, although

she says both machines have required minimal servicing. “We purchased the Trommel in May last year and the machine has already accumulated 1300 hours of use. The Mulch Master has been in operation for approximately 700 hours. There has been very minimal downtime during this period”.

“For any required upgrades we have requested, EDGE’s distributor, FOCUS Enviro has been at hand to supply the parts and support. My site now considers FOCUS Enviro a part of our team. They have come out and created great relationships with our operators, as well as myself.”



Teri Te, Veolia Site Supervisor



# EDGE GOES FROM STRENGTH TO STRENGTH WITH CAT POWER

EDGE Innovate has bounced back from the COVID pandemic and enforced nationwide closure with demand at an all-time high. Formula One has its Motorsport Corridor along the UK's M40. For computing and IT, it's California's Silicon Valley. And, according to Kevin Kelly of EDGE Innovate, the equivalent for heavy engineering is County Tyrone in Northern Ireland. "We're a technology hub" he explains. "There's a lot of knowhow in this area for heavy engineering. That makes it easier to find suppliers, subcontractors, and skilled staff."

## A REPUTATION FOR EXCELLENCE

This virtuous circle is one reason why EDGE Innovate has sprung back from the Covid pandemic with new products and full order books. The company's products have a well-founded reputation for quality and reliability. As Kelly acknowledges, CAT power plays to those strengths.

*"We don't aim to be the cheapest, but the best quality. Cat engines and our Cat dealer Finning are an integral part of that. We never forget that our customers can only earn when their machines are productive."*

## WORLDWIDE EXPORTS

EDGE Innovate exports 96% of its production to over 70 countries around the world, including Europe, North America, the Middle East and South Africa, with a product range that includes trommel screens, portable conveyors, material classifiers and industrial shredders. The Cat engines that power them span from the 55 kW C2.2 all the way to the 597 kW C18. "The breadth of the Cat range gives us the ability to meet each market's emission standards, whether it's EU Stage V or U.S. EPA Tier 4 Final," Kelly explains. "The engines are also well-integrated within our machines, with easy access for servicing and repair. That's another plus for the customer."

## POWER WITH EFFICIENCY

The flagship of the EDGE Innovate shredder range is the twin shaft VS420, which the company claims to be one of the most flexible and functional slow speed shredders on the market today. It's powered by the Cat C9.3B Stage V engine that develops 310 kW (420hp), giving it ample power to cope with a range of materials from tyres to railways sleepers, mattresses and construction waste. An integral EDGE Operating System (EOS) features on-board load sensing diagnostics for optimum efficiency.

## PLANNING FOR TOMORROW

Today, EDGE Innovate is looking ahead with confidence. Early 2021 saw the opening of a new 37,500 ft<sup>2</sup> factory at its Dungannon facility, which will see production capacity increase by up to 30 percent. The company has also been shortlisted for two categories in the Belfast Telegraph's Business Awards, for Excellence in Exporting and Best Large Company of the Year. As R&D manager, Kelly looks forward to each new day. "There are always new challenges, new weird and wonderful materials. Like how to shred and recycle the carbon fibre reinforced composites that you find on wind turbine blades. It keeps you on your toes." Whatever the future holds for EDGE Innovate, Finning and Cat engines will continue to give this go-ahead company the power to succeed.

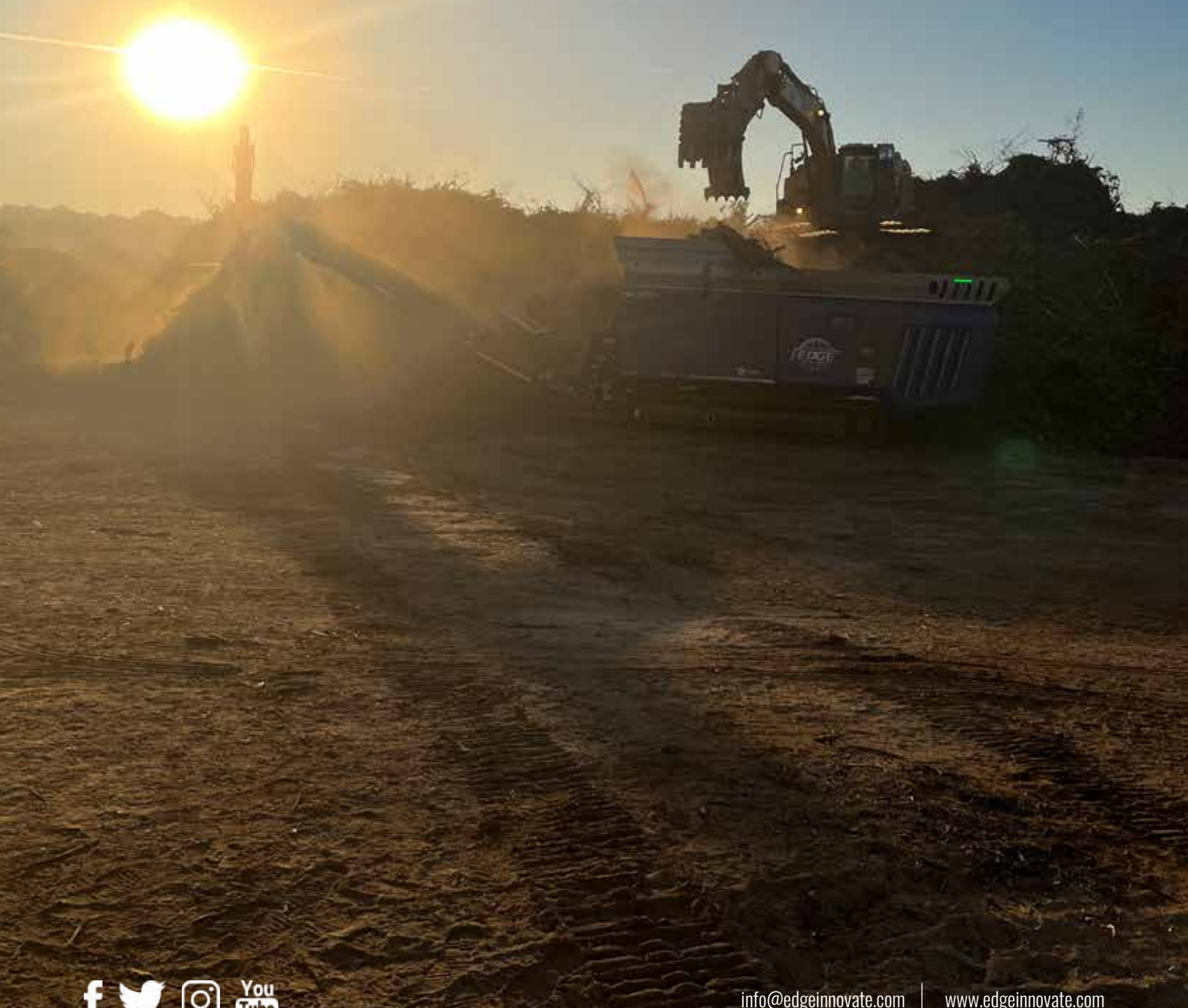




**WATCH VIDEO**



# NEXT LEVEL SOLUTIONS



[info@edgeinnovate.com](mailto:info@edgeinnovate.com)

[www.edgeinnovate.com](http://www.edgeinnovate.com)